



# MONTHLY MEMBERSHIP PROGRESS REPORT

District 19 D

Results as of: 5/31/2016

GMT: DENNIS STEVENSON

LOCATION WASHINGTON

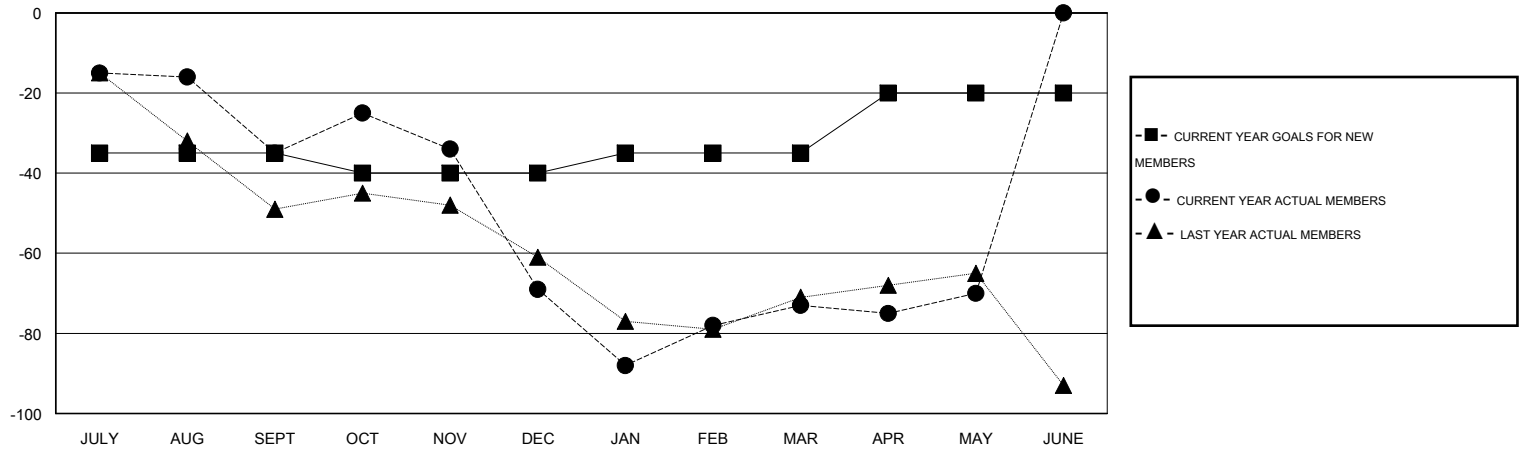
GMT CA 2

Clubs					Members				
RESULTS FOR 2015-2016					RESULTS FOR 2015-2016				
QUARTER	NEW CLUB GOAL	NEW CLUBS	DROPPED CLUBS	NET GAIN/LOSS	QUARTER	NEW MEMBER GOAL	CHARTER AND NEW MEMBERS ADDED	DROPPED MEMBERS	NET GAIN/LOSS
JULY/AUG/SEPT	0	0	1	-1	JULY/AUG/SEPT	-35	17	52	-35
OCT/NOV/DEC	0	0	2	-2	OCT/NOV/DEC	-5	46	80	-34
JAN/FEB/MAR	1	0	0	0	JAN/FEB/MAR	5	44	48	-4
APR/MAY/JUNE	0	0	0	0	APR/MAY/JUNE	15	25	22	3

GOALS AND ACTUAL NEW CLUBS CUMULATIVE



GOALS AND ACTUAL MEMBERS CUMULATIVE



DROPPED CLUBS: 3	41 CLUBS OF 57 ADDED 1 OR MORE NEW MEMBERS	<u>GENDER DISTRIBUTION</u>	
<u>DROPPED MEMBERS</u>		MALE	855 (61.87%)
DECEASED	<a href="#">CLICK HERE FOR HEALTH ASSESSMENT DATA</a>	FEMALE	527 (38.13%)
CLUB CANCELLED		FAMILY UNIT MEMBERS	309
OTHER		HEAD OF HOUSEHOLD	152
TOTAL		NON-HEAD OF HOUSEHOLD	157